



Notes:

- 1)  The XXX in the part number is the length of the assembly in inches.
- 2) Terminate connectors per manufactures assembly instructions. Locate labels within one inch of adhesive heat shrink.
- 3) Length tolerance +3/-0.
- 4) Prior to applying epoxy check continuity and cross with ID-PT-1 continuity tester.
- 5) Test assembly with TE460-137 and a monitor for color pattern.

ECN	REVISION	ZONE	SHEET	DESCRIPTION OF CHANGE	APPROVED	DATE
427	NR	-	-	INITIAL RELEASE	<i>RMK</i>	<i>6-30-21</i>

1	GFSC-2038	DVI-I DUAL LINK FEMALE/FEMALE COUPLER		11	
2	1181	COPPER TAPE		10	
2	GFSC-2035	DVI-D DUAL LINK PLUG		9	
6	ATUM12/3-0	.472" BLACK ADHESIVE HEAT SHRINK		8	
2	3PS-375-2-WT	.375 INCH WHITE HEAT SHRINK LABEL		7	
2	GFSC-2037	SIZE 2 D-SUB BACKSHELL		6	
10	M23053/5-101-0	3/64" BLACK HEAT SHRINK		5	
2ml	14270	5 MINUTE CLEAR EPOXY		4	
2.5	M23053/5-104-0	.125" BLACK HEAT SHRINK		3	
A/R	GF100-26HDMI	26 AWG HDMI CABLE		2	
	GFAHDMI-303-XXX	MALE DVI-D TO MALE DVI-D W/DVI-I COUPLER ASSEMBLY		1	
QTY	PART NUMBER	DESCRIPTION	ALTERNATE P/N	ITEM #	
-XXX	KIT BILL OF MATERIALS				
ASSY					
DESIGNED BY:	DATE:	CHECKED BY:	DATE:	APPROVED BY:	DATE:
J HERR	6/21/2021	<i>KIM KUEGEL</i>	<i>6-30-21</i>	<i>Chel Chapman</i>	<i>6-30-21</i>





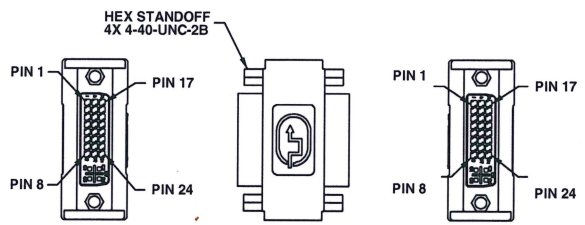
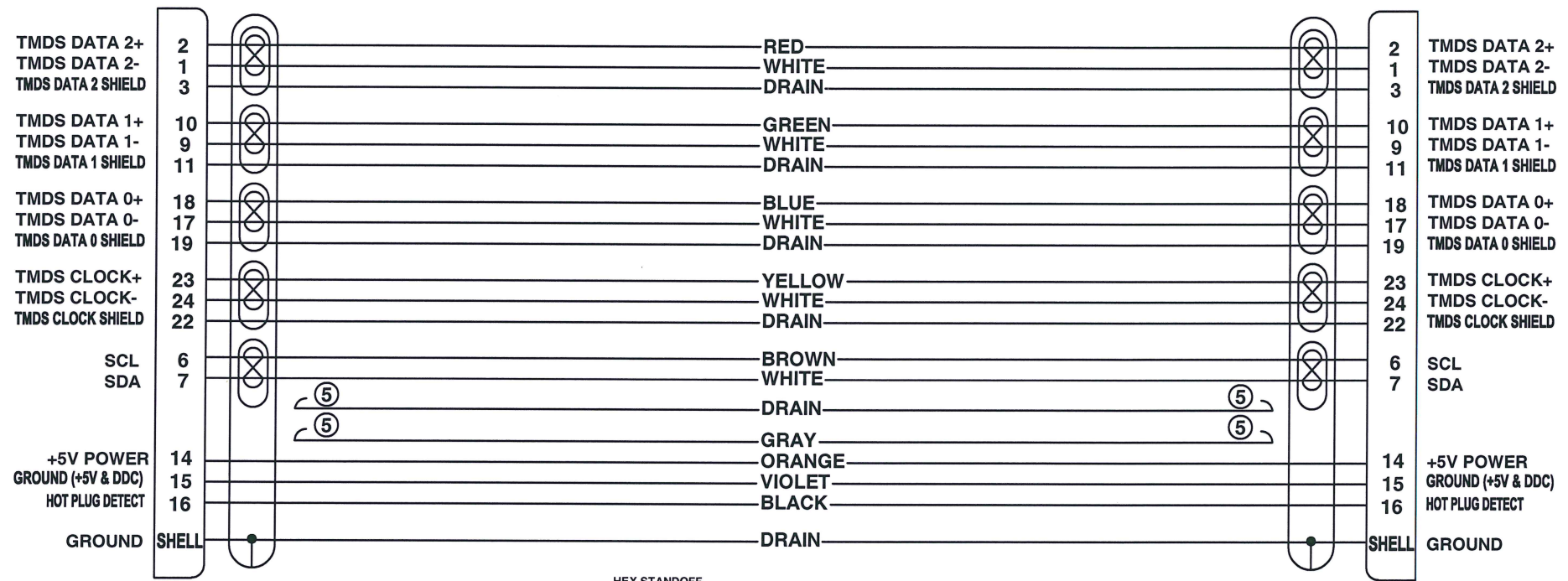
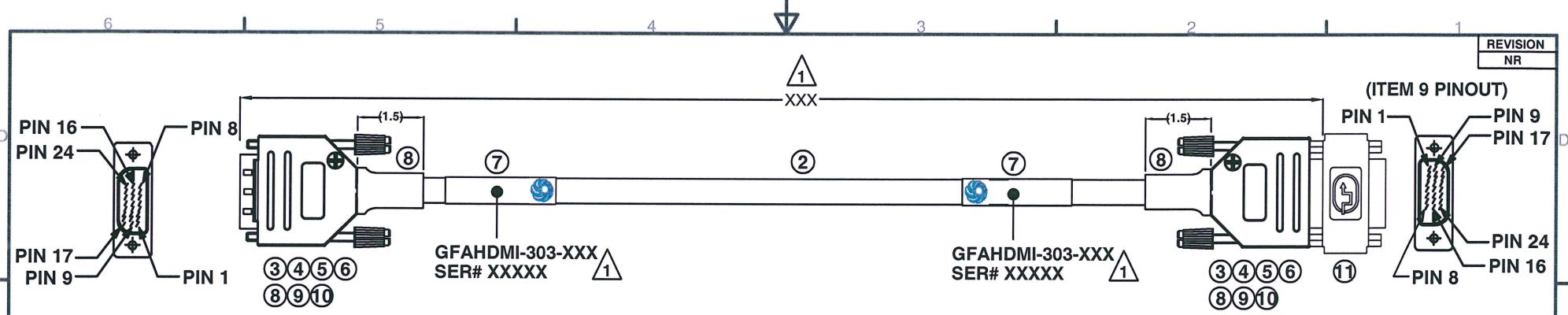
UNLESS OTHERWISE SPECIFIED:
ALL DIMENSIONS ARE IN INCHES.
ALL DIMENSIONS ARE FOR REFERENCE ONLY.



6180 Industrial Ct. Greendale WI, 53129
Tel: 414-488-6320 Fax: 414-433-9041

DESCRIPTION:
MALE DVI-D TO MALE DVI-D
W/DVI-I FEMALE COUPLER ASSEMBLY

CAGE CODE: 8A8D5	DRAWING NUMBER: GFAHDMI-303	SHEET: 1 OF 2
---------------------	--------------------------------	------------------



(ITEM 11 PINOUT)



6180 Industrial Ct. Greendale WI, 53129
Tel: 414-488-6320 Fax: 414-433-9041