

**Notes:**

1 The XXX in the part number is the length of the assembly in inches.

- 2) Terminate connectors per manufactures assembly instructions. Locate labels within one inch of adhesive heat shrink.
- 3) Length tolerance +3/-0.
- 4) Prior to applying epoxy check continuity and cross with ID-PT-1 continuity tester.
- 5) Test assembly per ATP-2001.

ECN	REVISION	ZONE	SHEET	DESCRIPTION OF CHANGE	APPROVED	DATE
427	NR	-	-	INITIAL RELEASE	KMK	6-30-2021
793	A	P/L	1	CHANGED ITEM 7 QTY FROM 20 TO 14, ITEM 8 QTY FROM 5 TO 3 ADDED ITEM 10 ATUM-16/4-0 , QTY 3.5	CC	10-16-23
799	B	P/L	1	CHANGED ITEM 2 FROM GF100-26HDMI-NX TO GF100-26HDMI	CC	10-23-23

3.5	ATUM-16/4-0	.630" BLACK ADHESIVE HEAT SHRINK	10	
0.5	M23053/5-108-0	.500 INCH BLACK HEAT SHRINK	9	
3	ATUM-12/3-0	.472" BLACK ADHESIVE HEAT SHRINK	8	
14	1181	EMI COPPER TAPE	7	
2	3PS-375-2-WT	.375 INCH WHITE HEAT SHRINK LABEL	6	
6	M23053/5-101-0	3/64" BLACK HEAT SHRINK	5	
2ml	14270	5 MINUTE CLEAR EPOXY	4	
2	GFSC-2034	HDMI PLUG CONNECTOR	3	
A/R	GF100-26HDMI	26 AWG HDMI CABLE	2	
	GFAHDMI-300-XXX	HDMI HARNESS ASSEMBLY	1	
QTY	PART NUMBER	DESCRIPTION	ALTERNATE P/N	ITEM #

BILL OF MATERIALS					
DESIGNED BY:	DATE:	CHECKED BY:	DATE:	APPROVED BY:	DATE:
C CHAPMAN	6-17-2021	KIM KRUEGER	6-30-2021	CHUCK CHAPMAN	6-30-2021



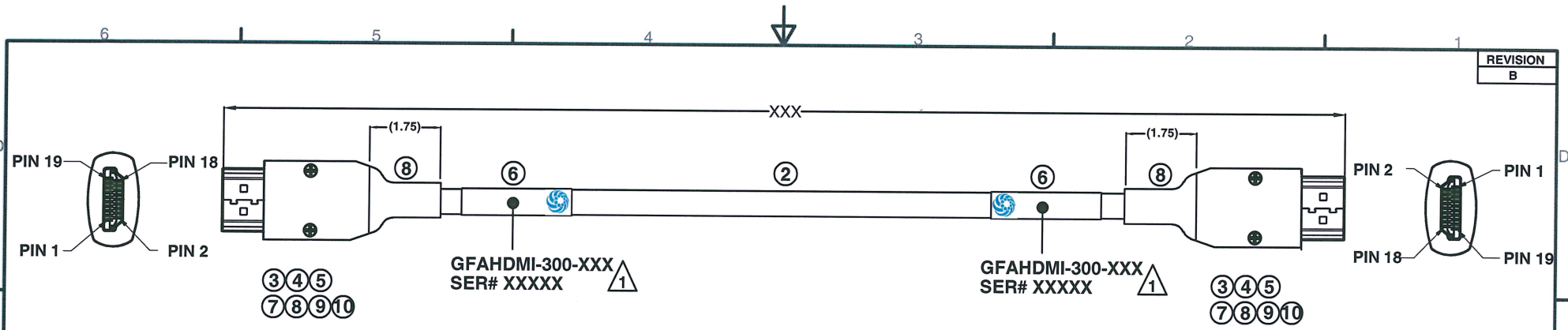
DESCRIPTION: HDMI HARNESS ASSEMBLY

6180 Industrial Ct. Greendale WI, 53129  
Tel: 414-488-6320 Fax: 414-433-9041

CAGE CODE: 8A8D5 DRAWING NUMBER: GFAHDMI-300 SHEET: 1 OF 2



UNLESS OTHERWISE SPECIFIED:  
ALL DIMENSIONS ARE IN INCHES.  
ALL DIMENSIONS ARE FOR REFERENCE ONLY.



TMDS DATA 2+	1	RED	1	TMDS DATA 2+
TMDS DATA 2-	3	WHITE	3	TMDS DATA 2-
TMDS DATA 2 SHIELD	5	DRAIN	5	TMDS DATA 2 SHIELD
TMDS DATA 1+	4	GREEN	4	TMDS DATA 1+
TMDS DATA 1-	6	WHITE	6	TMDS DATA 1-
TMDS DATA 1 SHIELD	2	DRAIN	2	TMDS DATA 1 SHIELD
TMDS DATA 0+	7	BLUE	7	TMDS DATA 0+
TMDS DATA 0-	9	WHITE	9	TMDS DATA 0-
TMDS DATA 0 SHIELD	11	DRAIN	11	TMDS DATA 0 SHIELD
TMDS CLOCK+	10	YELLOW	10	TMDS CLOCK+
TMDS CLOCK-	12	WHITE	12	TMDS CLOCK-
TMDS CLOCK SHIELD	8	DRAIN	8	TMDS CLOCK SHIELD
UTILITY/HEAC+	14	BROWN	14	UTILITY/HEAC+
HOT PLUG DETECT/HEAC-	19	WHITE	19	HOT PLUG DETECT/HEAC-
DDC/CEC GROUND/ HEAC SHIELD	17	DRAIN	17	DDC/CEC GROUND/ HEAC SHIELD
CEC	13	GRAY	13	CEC
SCL	15	ORANGE	15	SCL
SDA	16	VIOLET	16	SDA
+5V POWER	18	BLACK	18	+5V POWER
GROUND	SHELL	DRAIN	SHELL	GROUND



6180 Industrial Ct. Greendale WI, 53129  
Tel: 414-488-6320 Fax: 414-433-9041

CAGE CODE: 8A8D5	DRAWING NUMBER: GFAHDMI-300	SHEET: 2 OF 2
---------------------	--------------------------------	------------------