

Notes:

- 1) The XXX in the part number is the length of the assembly in inches.
- 2) Terminate connectors per manufactures assembly instructions. Locate labels within one inch of adhesive heat shrink.
- 3) Length tolerance +3/-0.
- 4) Prior to applying epoxy check continuity and cross with ID-PT-1 continuity tester.
- 5) Test assembly with TE460-137 and a monitor for color pattern.

ECN	REVISION	ZONE	SHEET	DESCRIPTION OF CHANGE	APPROVED	DATE
651	NR	-	-	INITIAL RELEASE	<i>RMK</i>	1-23-23

1	GFSC-2038	DVI-I DUAL LINK FEMALE/FEMALE COUPLER		13
1.25	M23053/5-104-0	.125" BLACK HEAT SHRINK		12
1	GFSC-2035	DVI-D DUAL LINK PLUG		11
0.5	M23053/5-108-0	.500" BLACK ADHESIVE HEAT SHRINK		10
4.5	ATUM12/3-0	.472" BLACK ADHESIVE HEAT SHRINK		9
12	1181	EMI COPPER TAPE		8
2	3PS-375-2-WT	.375 INCH WHITE HEAT SHRINK LABEL		7
1	GFSC-2037	SIZE 2 D-SUB BACKSHELL		6
12	M23053/5-101-0	3/64" BLACK HEAT SHRINK		5
2ml	14270	5 MINUTE CLEAR EPOXY		4
1	GFSC-2034	HDMI PLUG CONNECTOR		3
A/R	GF100-26HDMI	26 AWG HDMI CABLE		2
1	GFAHDMI-311-XXX	HDMI TO MALE DVI-D W/DVI-I COUPLER ASSEMBLY		1
QTY	PART NUMBER	DESCRIPTION	ALTERNATE P/N	ITEM #

KIT BILL OF MATERIALS					
DESIGNED BY:	DATE:	CHECKED BY:	DATE:	APPROVED BY:	DATE:
C CHAPMAN	1/23/2023	<i>Kim Kueger</i>	1-23-23	<i>Chuck Chapman</i>	1-23-23

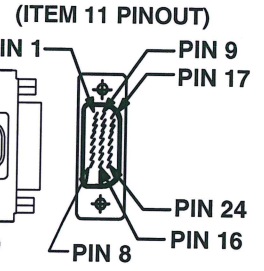
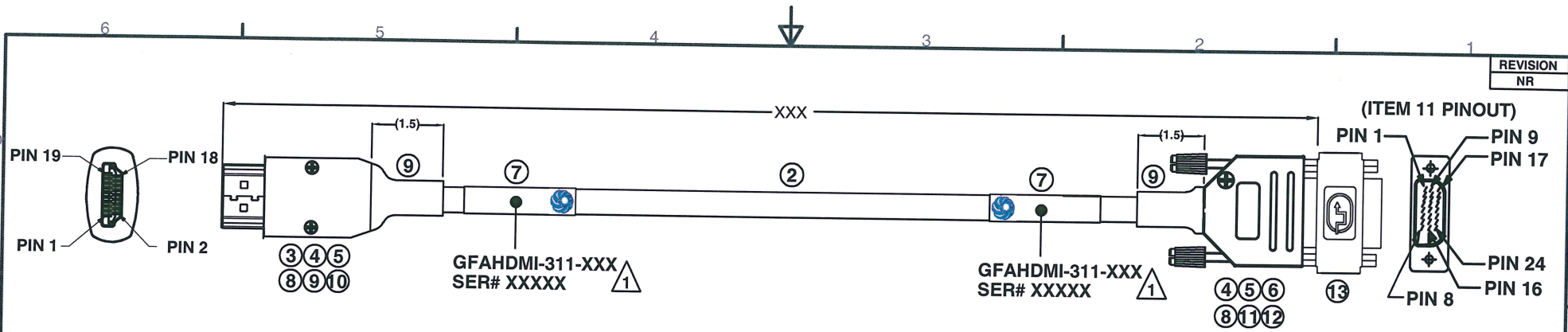


DESCRIPTION:  
HDMI TO MALE DVI-D  
W/DVI-I FEMALE COUPLER ASSEMBLY

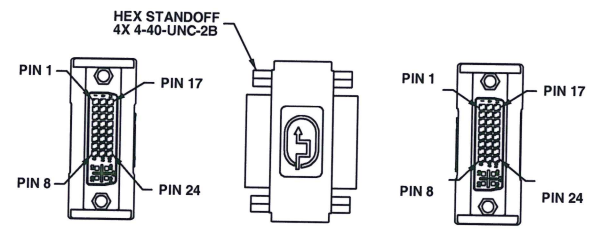
UNLESS OTHERWISE SPECIFIED:  
ALL DIMENSIONS ARE IN INCHES.  
ALL DIMENSIONS ARE FOR REFERENCE ONLY.

6180 Industrial Ct. Greendale WI, 53129  
Tel: 414-488-6320 Fax: 414-433-9041

CAGE CODE: 8A8D5	DRAWING NUMBER: GFAHDMI-311	SHEET: 1 OF 2
---------------------	--------------------------------	------------------



TMDS DATA 2+	1	RED	2	TMDS DATA 2+
TMDS DATA 2-	3	WHITE	1	TMDS DATA 2-
TMDS DATA 2 SHIELD	5	DRAIN	3	TMDS DATA 2 SHIELD
TMDS DATA 1+	4	GREEN	10	TMDS DATA 1+
TMDS DATA 1-	6	WHITE	9	TMDS DATA 1-
TMDS DATA 1 SHIELD	2	DRAIN	11	TMDS DATA 1 SHIELD
TMDS DATA 0+	7	BLUE	18	TMDS DATA 0+
TMDS DATA 0-	9	WHITE	17	TMDS DATA 0-
TMDS DATA 0 SHIELD	11	DRAIN	19	TMDS DATA 0 SHIELD
TMDS CLOCK+	10	YELLOW	23	TMDS CLOCK+
TMDS CLOCK-	12	WHITE	24	TMDS CLOCK-
TMDS CLOCK SHIELD	8	DRAIN	22	TMDS CLOCK SHIELD
UTILITY/HEAC+	14	BROWN	16	HOT PLUG DETECT
HOT PLUG DETECT/HEAC-	19	WHITE	15	GROUND (+5V & DDC)
DDC/CEC GROUND/HEAC SHIELD	17	DRAIN		
CEC	13	GRAY	6	SCL
SCL	15	ORANGE	7	SDA
SDA	16	VIOLET	14	+5V POWER
+5V POWER	18	BLACK		
GROUND	SHELL	DRAIN	SHELL	GROUND



6180 Industrial Ct. Greendale WI, 53129  
Tel: 414-488-6320 Fax: 414-433-9041