

Notes:

- 1) The XXX in the part number is the length of the assembly in inches.
- 2) Terminate connectors per manufactures assembly instructions. Locate labels within one inch of adhesive heat shrink.
- 3) Length tolerance +3/-0.
- 4) Prior to applying epoxy check continuity and cross with ID-PT-1 continuity tester.
- 5) Test assembly with TE460-137 and a monitor for color pattern.
- 6) Full fill D-Sub connector with all unused contacts.

ECN	REVISION	ZONE	SHEET	DESCRIPTION OF CHANGE	APPROVED	DATE
643	NR	-	-	INITIAL RELEASE	<i>KMK</i>	12-23-22

1.25	M23053/5-104-0	.125" BLACK HEAT SHRINK		12
1	GFSC-2036	HD26 D-SUB PLUG WITH PINS		11
0.5	M23053/5-108-0	.500" BLACK ADHESIVE HEAT SHRINK		10
4.5	ATUM12/3-0	.472" BLACK ADHESIVE HEAT SHRINK		9
12	1181	EMI COPPER TAPE		8
2	3PS-375-2-WT	.375 INCH WHITE HEAT SHRINK LABEL		7
1	GFSC-2037	SIZE 2 D-SUB BACKSHELL		6
8	M23053/5-101-0	3/64" BLACK HEAT SHRINK		5
1ml	14270	5 MINUTE CLEAR EPOXY		4
1	GFSC-2034	HDMI PLUG CONNECTOR		3
A/R	GF100-26HDMI-NX	26 AWG HDMI CABLE WITH NOMEX JACKET		2
	GFAHDMI-502-XXX	FLEXIBLE HDMI TO HD26 D-SUB PLUG CABLE ASSEMBLY		1
QTY	PART NUMBER	DESCRIPTION	ALTERNATE P/N	ITEM #
-XXX	BILL OF MATERIALS			
ASSY				

1

DESIGNED BY:	DATE:	CHECKED BY:	DATE:	APPROVED BY:	DATE:
C CHAPMAN	12/23/2022	<i>Kim Krueger</i>	12-23-2022	<i>Ch Chapman</i>	12-23-2022



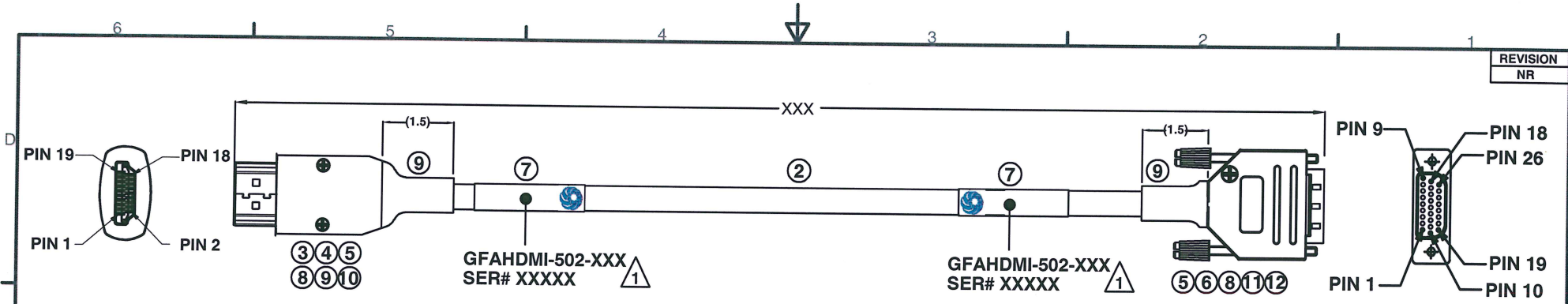
DESCRIPTION:
FLEXIBLE HDMI TO HD26 D-SUB PLUG CABLE ASSEMBLY

UNLESS OTHERWISE SPECIFIED:
ALL DIMENSIONS ARE IN INCHES.
ALL DIMENSIONS ARE FOR REFERENCE ONLY.

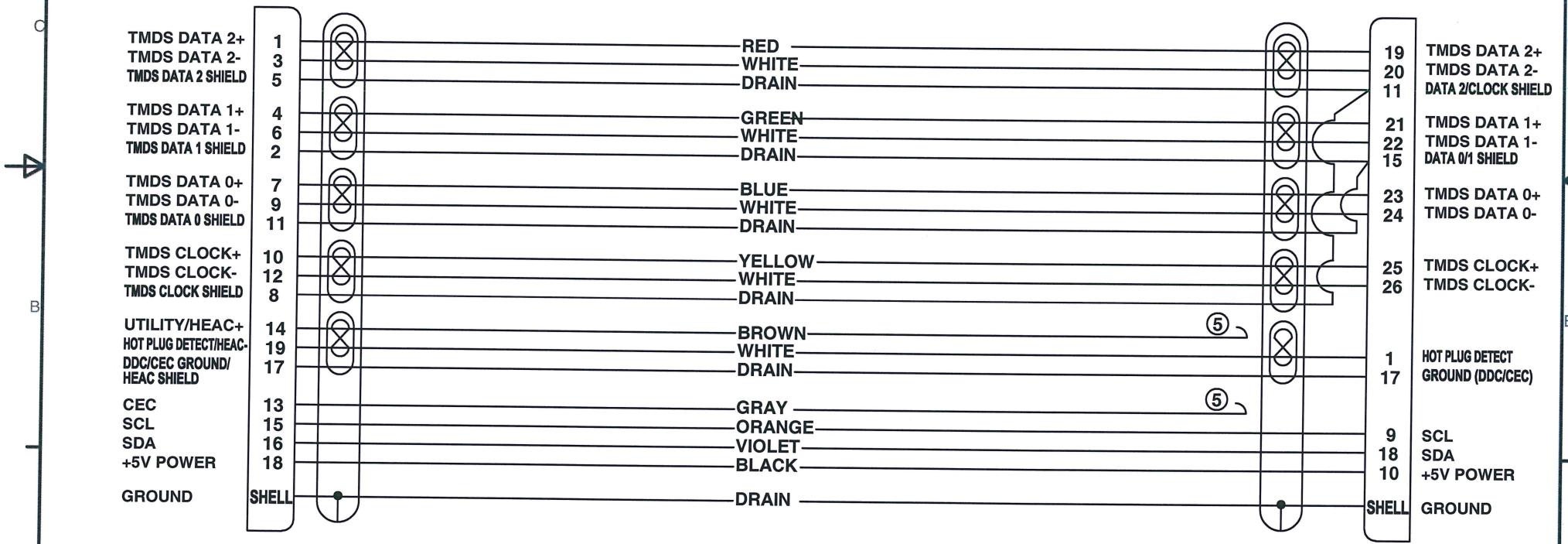
6180 Industrial Ct. Greendale WI, 53129
Tel: 414-488-6320 Fax: 414-433-9041

CAGE CODE:	DRAWING NUMBER:	SHEET:
8A8D5	GFAHDMI-502	1 OF 2





UNUSED D-SUB CONTACTS
 6
 2-8, 12-14, 16



GIGAFLIGHT
 CONNECTIVITY INC.
 6180 Industrial Ct. Greendale WI, 53129
 Tel: 414-488-6320 Fax: 414-433-9041