

Notes:

1 The XXX in the part number is the length of the assembly in inches.

- 2) Terminate connectors per manufactures assembly instructions. Locate labels within one inch of adhesive heat shrink.
- 3) Length tolerance +3/-0.
- 4) Prior to applying epoxy check continuity and cross with ID-PT-1 continuity tester.
- 5) Test assembly per ATP-2001.

ECN	REVISION	ZONE	SHEET	DESCRIPTION OF CHANGE	APPROVED	DATE
637	NR	-	-	INITIAL RELEASE	KMK	12-1-2022
793	A	P/L	1	CHANGED ITEM 7 QTY FROM 20 TO 14, ITEM 8 QTY FROM 5 TO 3 ADDED ITEM 10 ATUM-16/4-0 , QTY 3.5	CC	10-16-2024
898	B	P/L	1	CHANGED ITEM 9 FROM M23053/5-108-0 TO M23053/5-104-0 QTY 0.5 TO 7. ITEM 5 TO CHANGE FROM 6 TO 12.	TF	4/2/2024

3.5	ATUM-16/4-0	.630" BLACK ADHESIVE HEAT SHRINK	10	
7	M23053/5-104-0	.125 INCH BLACK HEAT SHRINK	9	
3	ATUM-12/3-0	.472" BLACK ADHESIVE HEAT SHRINK	8	
14	1181	EMI COPPER TAPE	7	
2	3PS-375-2-WT	.375 INCH WHITE HEAT SHRINK LABEL	6	
12	M23053/5-101-0	3/64" BLACK HEAT SHRINK	5	
2ml	14270	5 MINUTE CLEAR EPOXY	4	
2	GFSC-2034	HDMI PLUG CONNECTOR	3	
A/R	GF100-26HDMI-NX	26 AWG HDMI CABLE WITH NOMEX JACKET	2	
1	GFAHDMI-500-XXX	FLEXIBLE HDMI PLUG TO PLUG ASSEMBLY	1	
QTY	PART NUMBER	DESCRIPTION	ALTERNATE P/N	ITEM #

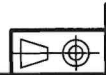
1

BILL OF MATERIALS					
DESIGNED BY:	DATE:	CHECKED BY:	DATE:	APPROVED BY:	DATE:
C CHAPMAN	12/1/2022	KIM KRUEGER	12/1/2022	CHUCK CHAPMAN	12/1/2022

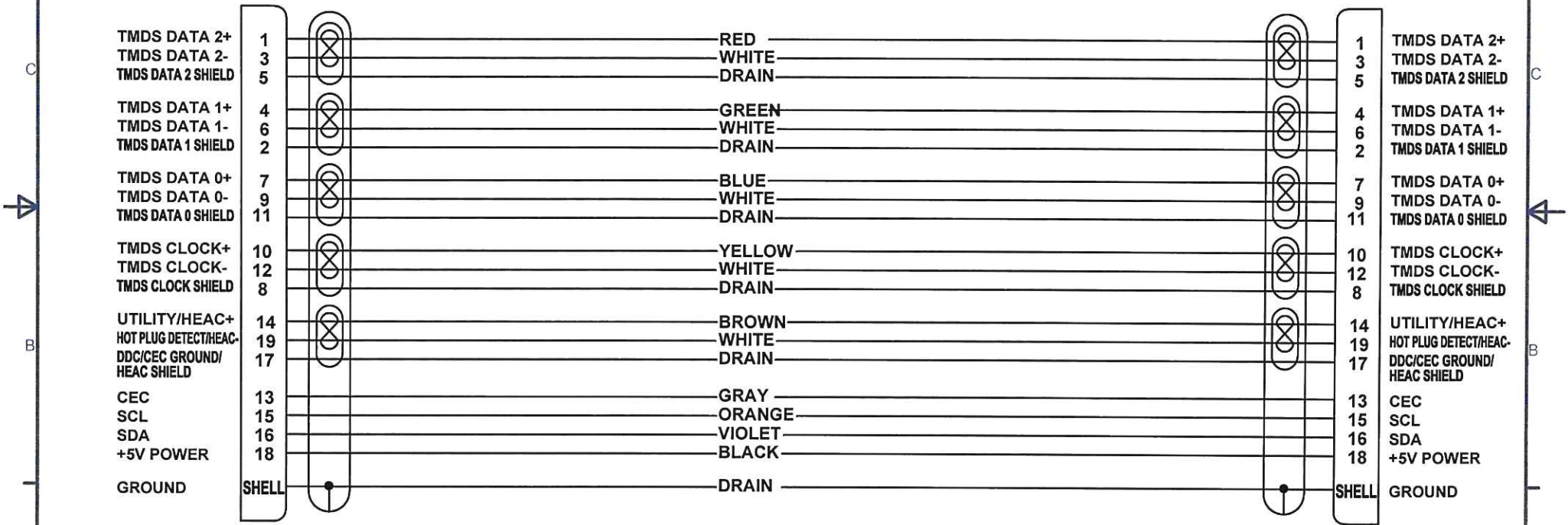
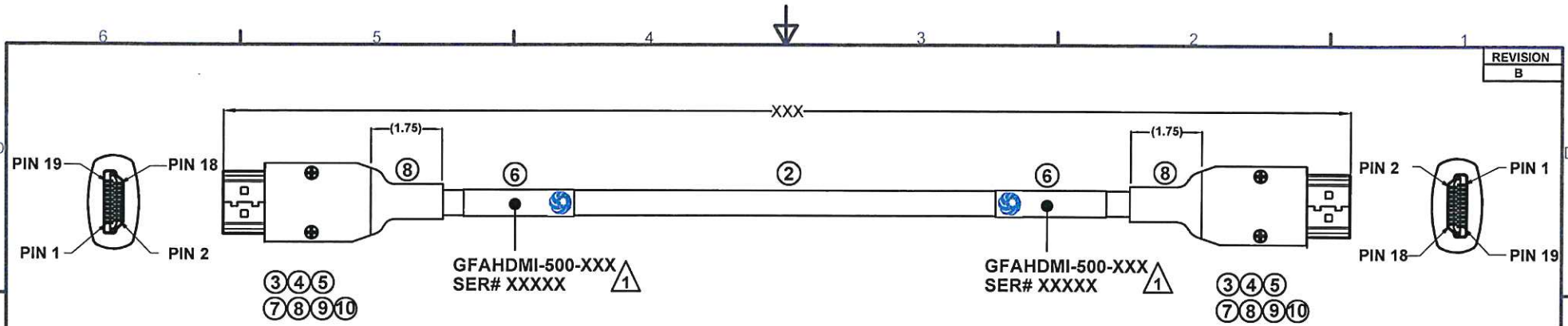


6180 Industrial Ct. Greendale WI, 53129
Tel: 414-488-6320 Fax: 414-433-9041

DESCRIPTION:		
FLEXIBLE HDMI PLUG TO PLUG ASSEMBLY		
CAGE CODE:	DRAWING NUMBER:	SHEET:
8A8D5	GFAHDMI-500	1 OF 2



UNLESS OTHERWISE SPECIFIED:
ALL DIMENSIONS ARE IN INCHES.
ALL DIMENSIONS ARE FOR REFERENCE ONLY.



6180 Industrial Ct. Greendale WI, 53129
Tel: 414-488-6320 Fax: 414-433-9041

CAGE CODE: 8A8D5	DRAWING NUMBER: GFAHDMI-500	SHEET: 2 OF 2
---------------------	--------------------------------	------------------