


ECN	REVISION	ZONE	SHEET	DESCRIPTION OF CHANGE	APPROVED	DATE
890	NR	-	-	INITIAL RELEASE	CC	3-19-24

Notes:

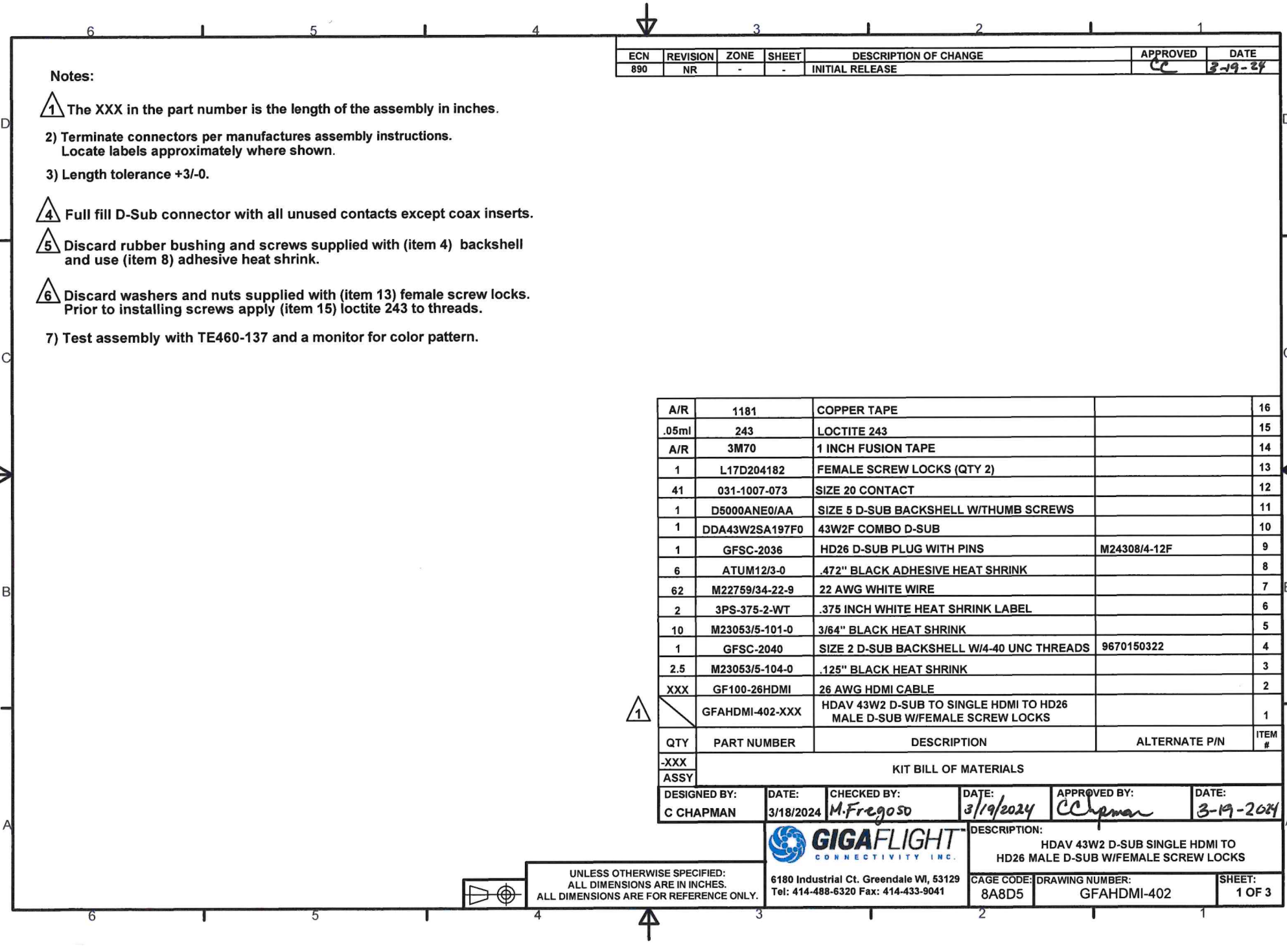
- 1) The XXX in the part number is the length of the assembly in inches.
- 2) Terminate connectors per manufactures assembly instructions. Locate labels approximately where shown.
- 3) Length tolerance +3/-0.
- 4) Full fill D-Sub connector with all unused contacts except coax inserts.
- 5) Discard rubber bushing and screws supplied with (item 4) backshell and use (item 8) adhesive heat shrink.
- 6) Discard washers and nuts supplied with (item 13) female screw locks. Prior to installing screws apply (item 15) loctite 243 to threads.
- 7) Test assembly with TE460-137 and a monitor for color pattern.

A/R	1181	COPPER TAPE		16
.05ml	243	LOCTITE 243		15
A/R	3M70	1 INCH FUSION TAPE		14
1	L17D204182	FEMALE SCREW LOCKS (QTY 2)		13
41	031-1007-073	SIZE 20 CONTACT		12
1	D5000ANE0/AA	SIZE 5 D-SUB BACKSHELL W/THUMB SCREWS		11
1	DDA43W2SA197F0	43W2F COMBO D-SUB		10
1	GFSC-2036	HD26 D-SUB PLUG WITH PINS	M24308/4-12F	9
6	ATUM12/3-0	.472" BLACK ADHESIVE HEAT SHRINK		8
62	M22759/34-22-9	22 AWG WHITE WIRE		7
2	3PS-375-2-WT	.375 INCH WHITE HEAT SHRINK LABEL		6
10	M23053/5-101-0	3/64" BLACK HEAT SHRINK		5
1	GFSC-2040	SIZE 2 D-SUB BACKSHELL W/4-40 UNC THREADS	9670150322	4
2.5	M23053/5-104-0	.125" BLACK HEAT SHRINK		3
XXX	GF100-26HDMI	26 AWG HDMI CABLE		2
1	GFAHDMI-402-XXX	HDAV 43W2 D-SUB TO SINGLE HDMI TO HD26 MALE D-SUB W/FEMALE SCREW LOCKS		1
QTY	PART NUMBER	DESCRIPTION	ALTERNATE P/N	ITEM #

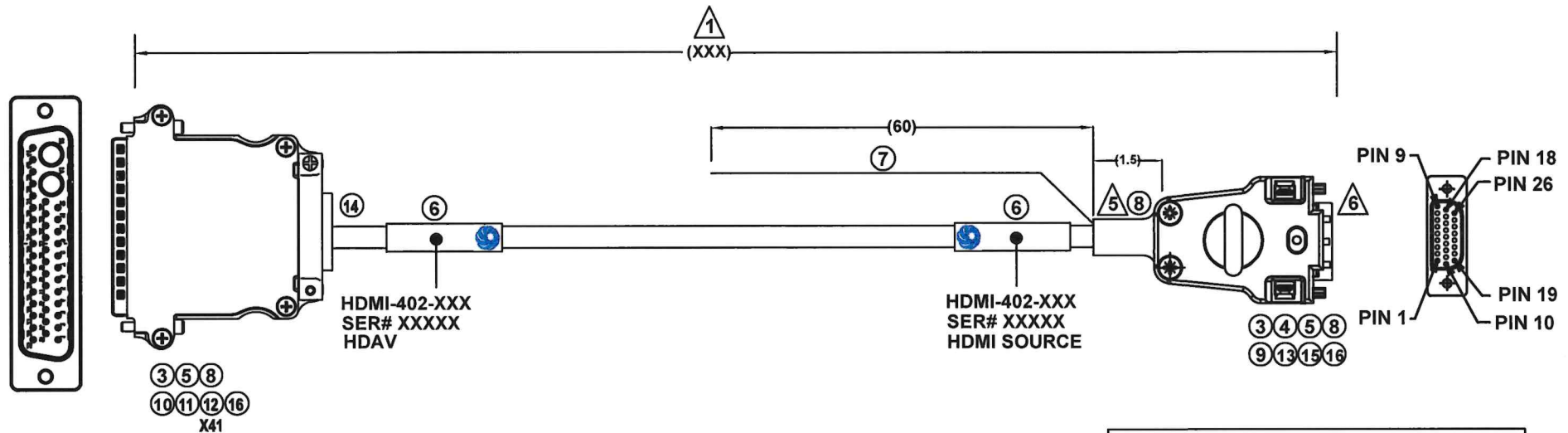
QTY	PART NUMBER	DESCRIPTION	ALTERNATE P/N	ITEM #
-XXX	KIT BILL OF MATERIALS			
ASSY				
DESIGNED BY:	DATE:	CHECKED BY:	DATE:	APPROVED BY:
C CHAPMAN	3/18/2024	M.Fregoso	3/19/2024	CC Chapman
				DATE:
				3-19-2024

	DESCRIPTION:	
	HDAV 43W2 D-SUB SINGLE HDMI TO HD26 MALE D-SUB W/FEMALE SCREW LOCKS	
CAGE CODE:	DRAWING NUMBER:	SHEET:
8A8D5	GFAHDMI-402	1 OF 3

UNLESS OTHERWISE SPECIFIED:
ALL DIMENSIONS ARE IN INCHES.
ALL DIMENSIONS ARE FOR REFERENCE ONLY.



REVISION
NR



△ 4 HDAV UNUSED D-SUB CONTACTS
6-9, 17-24, 30-41, A1, A2

△ 4 HDMI SOURCE UNUSED D-SUB CONTACTS
3-8, 12-14, 16



6180 Industrial Ct. Greendale WI, 53129
Tel: 414-488-6320 Fax: 414-433-9041

CAGE CODE: 8A8D5	DRAWING NUMBER: GFAHDMI-402	SHEET: 2 OF 3
---------------------	--------------------------------	------------------

