

Notes:

- 1) The XXX in the part number is the length of the assembly in inches.
- 2) Terminate connectors per manufactures assembly instructions. Locate labels within one inch of adhesive heat shrink.
- 3) Length tolerance +3/-0.
- 4) Prior to applying epoxy check continuity and cross with ID-PT-1 continuity tester. All signal shields must not be connected to case grund or shielded backshell.
- 5) Test assembly with TE460-137 and a monitor for color pattern.
- 6) Full fill D-Sub connector with all unused contacts.
- 7) Discard washer and nut supplied with (item 13) spring latch plate. Install latch plate as shown sheet 2 zone D2 for proper fit on connector. Apply 243 loctite (item 14) prior to installing screws from spring latch plate.
- 8) Discard rubber bushing supplied with (item 6) backshell.

ECN	REVISION	ZONE	SHEET	DESCRIPTION OF CHANGE	APPROVED	DATE
522	NR	-	-	INITIAL RELEASE	KMK	2/8/2022
952	A	P/L C5/D2/D5	1 2	UPDATE ITEM 5 QTY FROM 8 TO 10. UPDATE ITEM 8 QTY FROM 10 TO 7. UPDATE ITEM 9 QTY FROM 5 TO 3. UPDATE ITEM 12 QTY FROM 1.25 TO 2.5. ADD ATUM-16/4-0 WITH QTY 1.75. ADD ITEM 15 TO PAGE 2. REMOVE ITEM 10 ON THE HDMI CONNECTOR PAGE 2.	TF	6/21/24

1.75	ATUM-16/4-0	.630" BLACK ADHESIVE HEAT SHRINK	15	
.01ml	243	243 LOCTITE	14	
2	D110278	SPRING LATCH PLATE	13	
2.5	M23053/5-104-0	.125" BLACK HEAT SHRINK	12	
1	GFSC-2036	HD26 D-SUB PLUG WITH PINS	11	
1	M23053/5-108-0	.500" BLACK ADHESIVE HEAT SHRINK	10	
3	ATUM12/3-0	.472" BLACK ADHESIVE HEAT SHRINK	9	
7	1181	EMI COPPER TAPE	8	
2	3PS-375-2-WT	.375 INCH WHITE HEAT SHRINK LABEL	7	
1	GFSC-2040	SIZE 2 EMI D-SUB BACKSHELL	6	
10	M23053/5-101-0	3/64" BLACK HEAT SHRINK	5	
1ml	14270	5 MINUTE CLEAR EPOXY	4	
1	GFSC-2034	HDMI PLUG CONNECTOR	3	
A/R	GF100-26HDMI	26 AWG HDMI CABLE	2	
1	GFAHDMI-310-XXX	HDMI PLUG TO HD26 MALE D-SUB WITH LATCH PLATES	1	
QTY	PART NUMBER	DESCRIPTION	ALTERNATE P/N	ITEM #

KIT BILL OF MATERIALS					
DESIGNED BY:	DATE:	CHECKED BY:	DATE:	APPROVED BY:	DATE:
C CHAPMAN	2/7/2022	K KRUEGER	2/8/2022	C CHAPMAN	2/8/2022



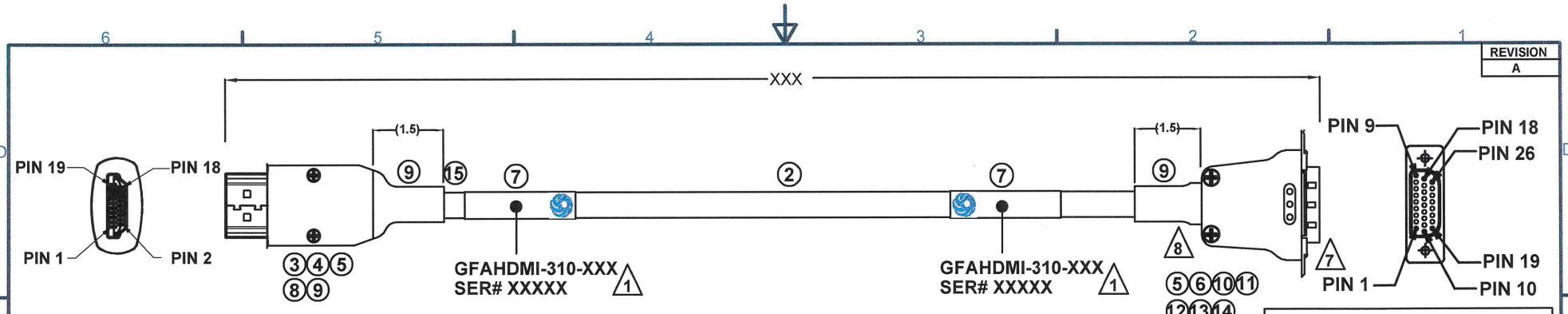
DESCRIPTION:
HDMI PLUG TO HD26 MALE D-SUB WITH LATCH PLATES

6180 Industrial Ct. Greendale WI, 53129
Tel: 414-488-6320 Fax: 414-433-9041

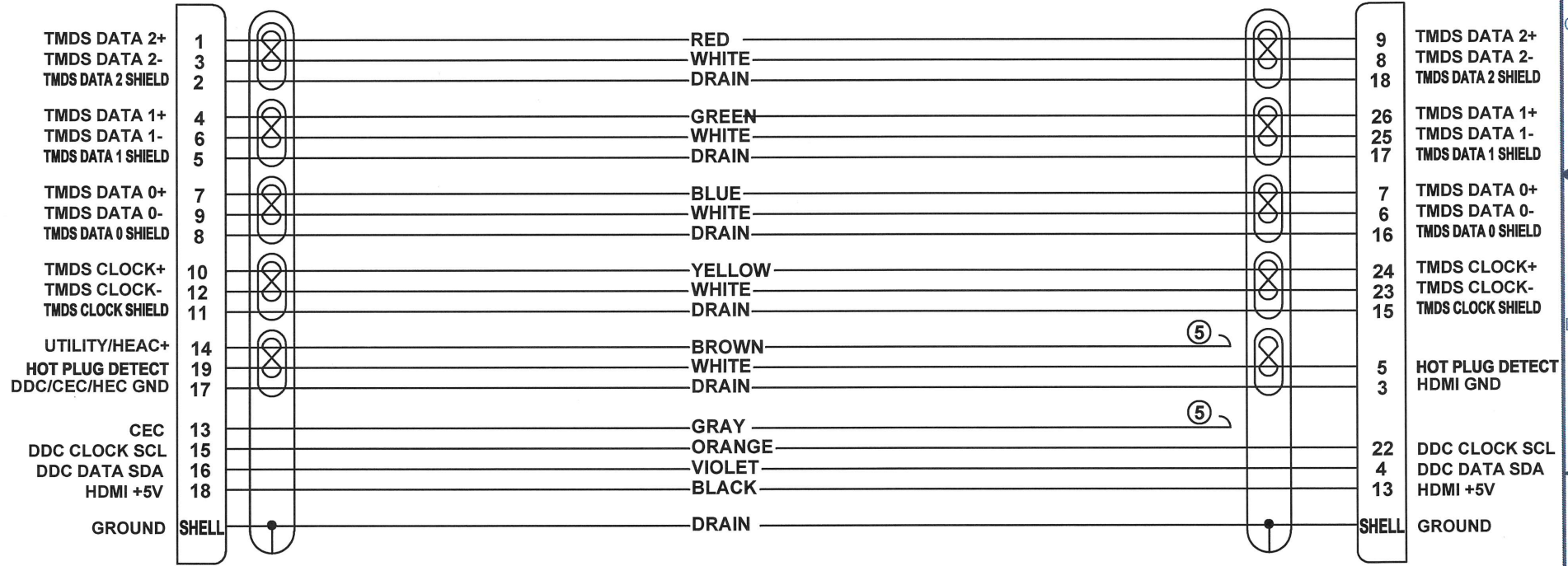
CAGE CODE:	DRAWING NUMBER:	SHEET:
8A8D5	GFAHDMI-310	1 OF 2

UNLESS OTHERWISE SPECIFIED:
ALL DIMENSIONS ARE IN INCHES.
ALL DIMENSIONS ARE FOR REFERENCE ONLY.





△ 6 UNUSED D-SUB CONTACTS
1 - 2, 10, 11, 12, 14, 19 - 21



6180 Industrial Ct. Greendale WI, 53129
Tel: 414-488-6320 Fax: 414-433-9041