

Notes:

- 1) The XXX in the part number is the length of the assembly in inches.
- 2) Terminate connectors per manufactures assembly instructions. Locate labels within one inch of adhesive heat shrink.
- 3) Length tolerance +3/-0.
- 4) Prior to applying epoxy check continuity and cross with ID-PT-1 continuity tester. All signal shields must not be connected to case grund or shielded backshell.
- 5) Test assembly with TE460-137 and a monitor for color pattern.
- 6) Full fill D-Sub connector with all unused contacts.
- 7) Discard washer and nut supplied with (item 13) spring latch assembly. Apply 243 loctite (item 14) prior to installing screws from spring latch assembly.
- 8) Discard rubber bushing supplied with (item 6) backshell.

ECN	REVISION	ZONE	SHEET	DESCRIPTION OF CHANGE	APPROVED	DATE
507	NR	-	-	INITIAL RELEASE	KMK	1-14-22
513	A	P/L	1	ITEM 8 QTY FROM 12 TO 10, ITEM 9 QTY FROM 4.5 TO 5 ITEM 10 QTY FROM 0.5 TO 1 NOTE 4: ADDED ALL SIGNAL SHIELDS MUST NOT BE CONNECTED TO CASE GROUND OR SHIELDED BACK SHELL.	KMK	1-19-22

.01ml	243	243 LOCTITE	14
2	D110277	SPRING LATCH ASSEMBLY	13
1.25	M23053/5-104-0	.125" BLACK HEAT SHRINK	12
1	GFSC-2041	HD26 D-SUB RECEPTACLE WITH SOCKETS	11
1	M23053/5-108-0	.500" BLACK ADHESIVE HEAT SHRINK	10
5	ATUM12/3-0	.472" BLACK ADHESIVE HEAT SHRINK	9
10	1181	EMI COPPER TAPE	8
2	3PS-375-2-WT	.375 INCH WHITE HEAT SHRINK LABEL	7
1	GFSC-2040	SIZE 2 EMI D-SUB BACKSHELL	6
8	M23053/5-101-0	3/64" BLACK HEAT SHRINK	5
1ml	14270	5 MINUTE CLEAR EPOXY	4
1	GFSC-2034	HDMI PLUG CONNECTOR	3
A/R	GF100-26HDMI	26 AWG HDMI CABLE	2
1	GFAHDMI-309-XXX	HDMI PLUG TO HD26 FEMALE D-SUB WITH SPRING LATCH	1

QTY	PART NUMBER	DESCRIPTION	ALTERNATE P/N	ITEM #
-XXX	BILL OF MATERIALS			
ASSY				

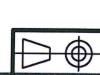
DESIGNED BY:	DATE:	CHECKED BY:	DATE:	APPROVED BY:	DATE:
C CHAPMAN	1/14/2022	KIM KRUEGER	1-14-2022	CHUCK CHAPMAN	1-14-2022



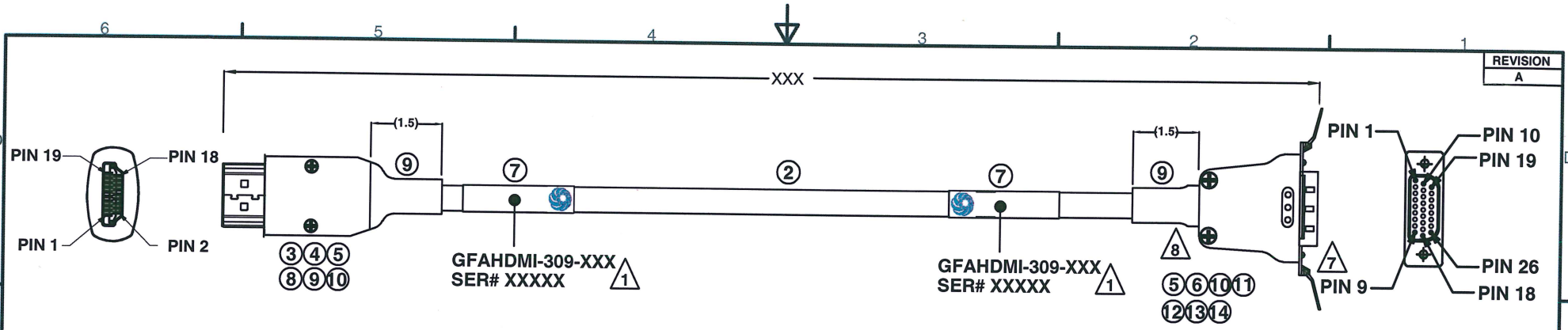
6180 Industrial Ct. Greendale WI, 53129
Tel: 414-488-6320 Fax: 414-433-9041

DESCRIPTION:
HDMI PLUG TO HD26 FEMALE D-SUB WITH SPRING LATCH

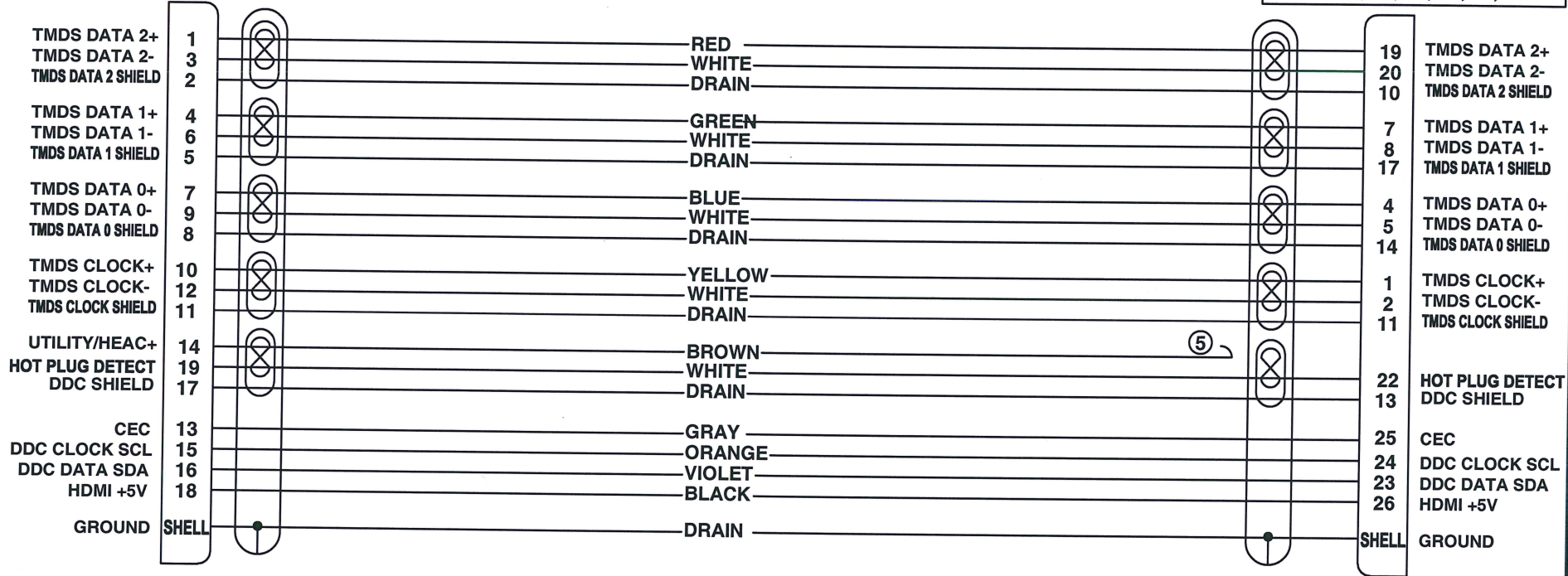
CAGE CODE:	DRAWING NUMBER:	SHEET:
8A8D5	GFAHDMI-309	1 OF 2



UNLESS OTHERWISE SPECIFIED:
ALL DIMENSIONS ARE IN INCHES.
ALL DIMENSIONS ARE FOR REFERENCE ONLY.



△ 6 UNUSED D-SUB CONTACTS
3, 6, 9, 12, 15, 16, 18, 21



GIGAFLIGHT™
CONNECTIVITY INC.
6180 Industrial Ct. Greendale WI, 53129
Tel: 414-488-6320 Fax: 414-433-9041