


ECN	REVISION	ZONE	SHEET	DESCRIPTION OF CHANGE	APPROVED	DATE
1023	NR	-	-	INITIAL RELEASE	SC	10-21-24

Notes:

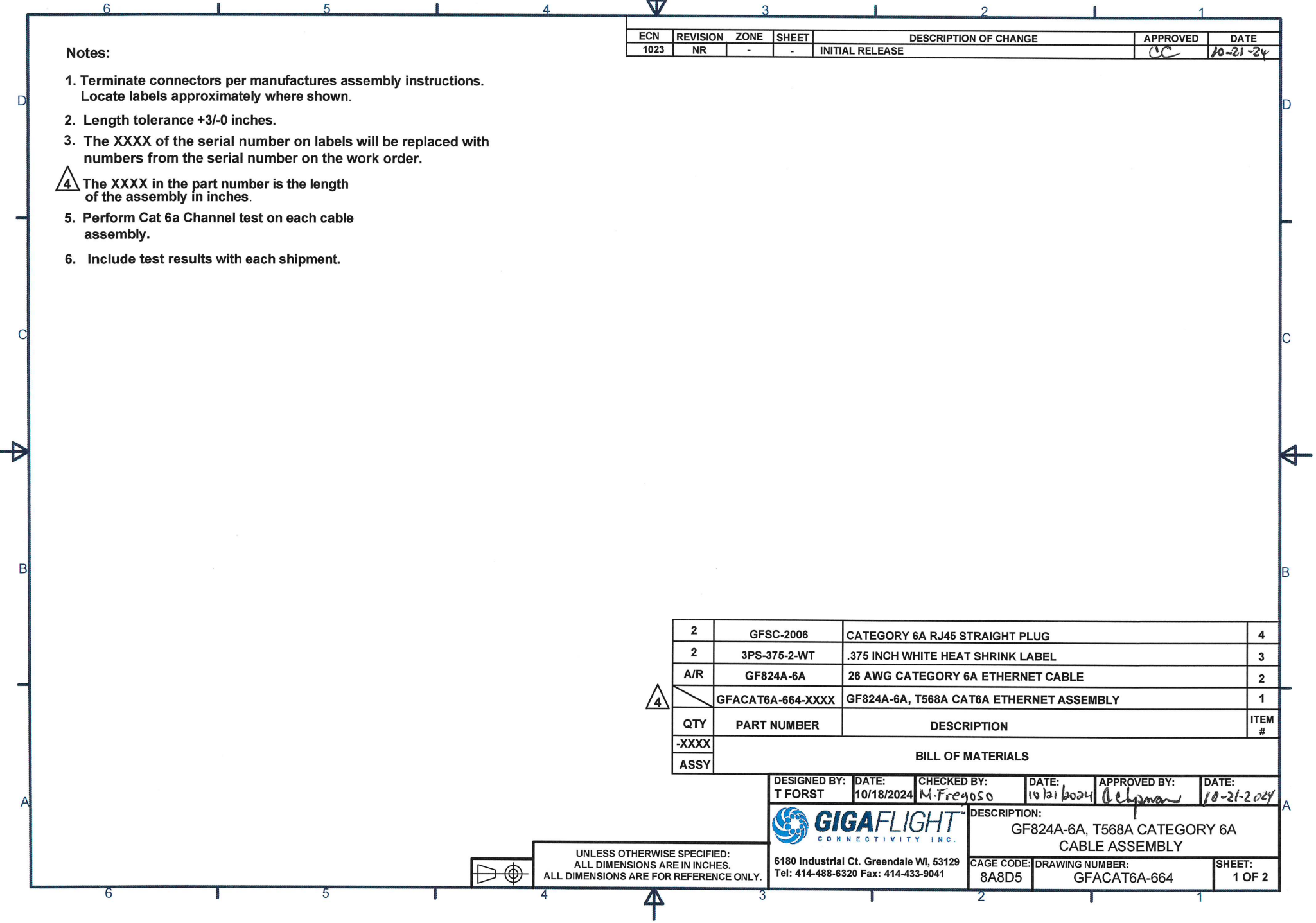
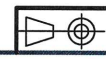
1. Terminate connectors per manufactures assembly instructions.
Locate labels approximately where shown.
2. Length tolerance +3/-0 inches.
3. The XXXX of the serial number on labels will be replaced with numbers from the serial number on the work order.
4. The XXXX in the part number is the length of the assembly in inches.
5. Perform Cat 6a Channel test on each cable assembly.
6. Include test results with each shipment.

2	GFSC-2006	CATEGORY 6A RJ45 STRAIGHT PLUG	4
2	3PS-375-2-WT	.375 INCH WHITE HEAT SHRINK LABEL	3
A/R	GF824A-6A	26 AWG CATEGORY 6A ETHERNET CABLE	2
4	GFACAT6A-664-XXXX	GF824A-6A, T568A CAT6A ETHERNET ASSEMBLY	1
QTY	PART NUMBER	DESCRIPTION	ITEM #
-XXXX	BILL OF MATERIALS		
ASSY			

DESIGNED BY:	DATE:	CHECKED BY:	DATE:	APPROVED BY:	DATE:
T FORST	10/18/2024	M. Freyoso	10/21/2024	[Signature]	10-21-2024

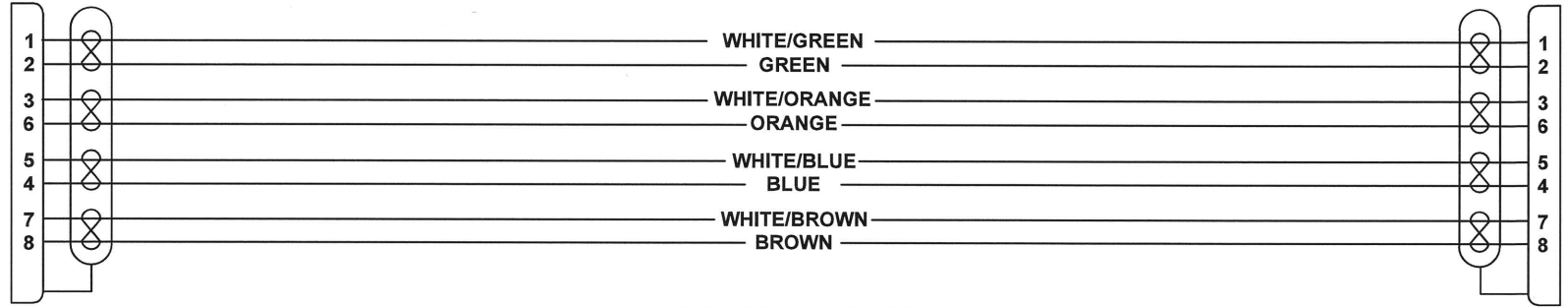
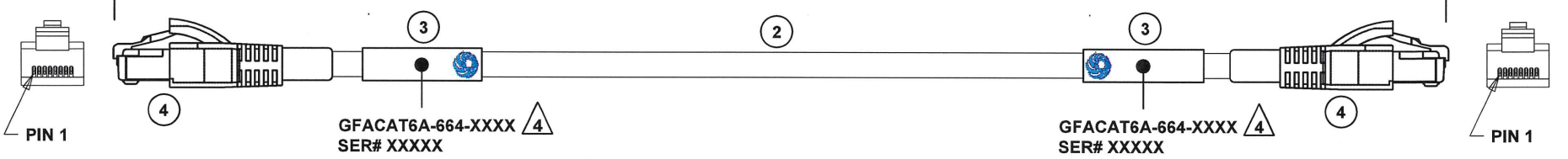
		DESCRIPTION: GF824A-6A, T568A CATEGORY 6A CABLE ASSEMBLY	
6180 Industrial Ct. Greendale WI, 53129 Tel: 414-488-6320 Fax: 414-433-9041		CAGE CODE: 8A8D5	DRAWING NUMBER: GFACAT6A-664
		SHEET:	1 OF 2

UNLESS OTHERWISE SPECIFIED:
ALL DIMENSIONS ARE IN INCHES.
ALL DIMENSIONS ARE FOR REFERENCE ONLY.



GFACAT6A-664-XXXX

 XXXX



(T568A PIN OUT)



6180 Industrial Ct. Greendale WI, 53129
Tel: 414-488-6320 Fax: 414-433-9041

CAGE CODE: 8A8D5	DRAWING NUMBER: GFACAT6A-570	SHEET: 2 OF 2
---------------------	---------------------------------	------------------